



## 2010 Collision statistics for Gloucestershire



# Gloucestershire Collision Statistics 2010

## Introduction:

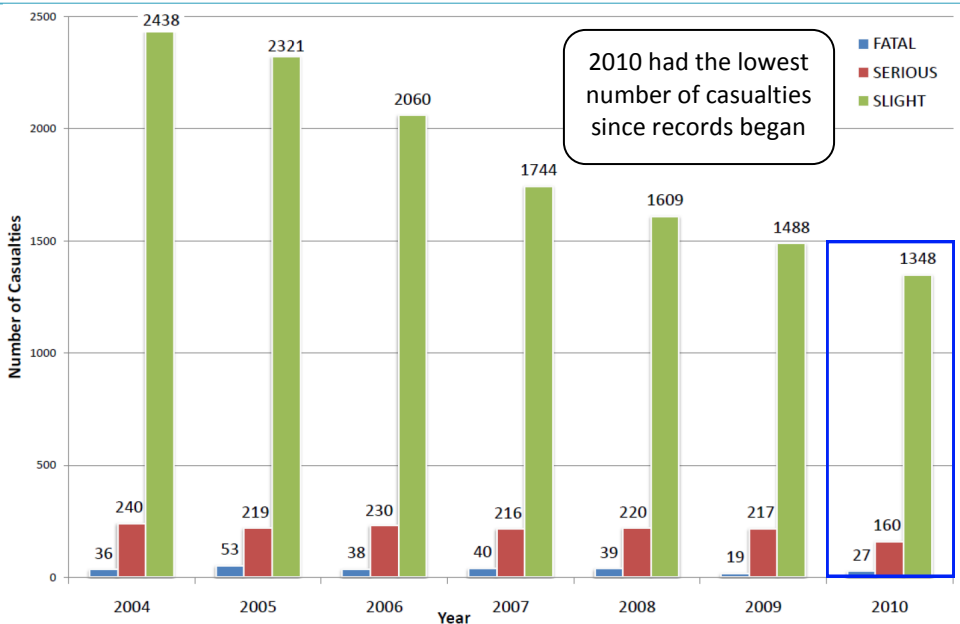
The Gloucestershire Road Safety Partnership has produced this leaflet as an overview of the road casualty statistics collected within 2010. The data within this leaflet relates to personal injury collisions that have occurred within Gloucestershire and have been reported to the police.

## Overview for Gloucestershire:

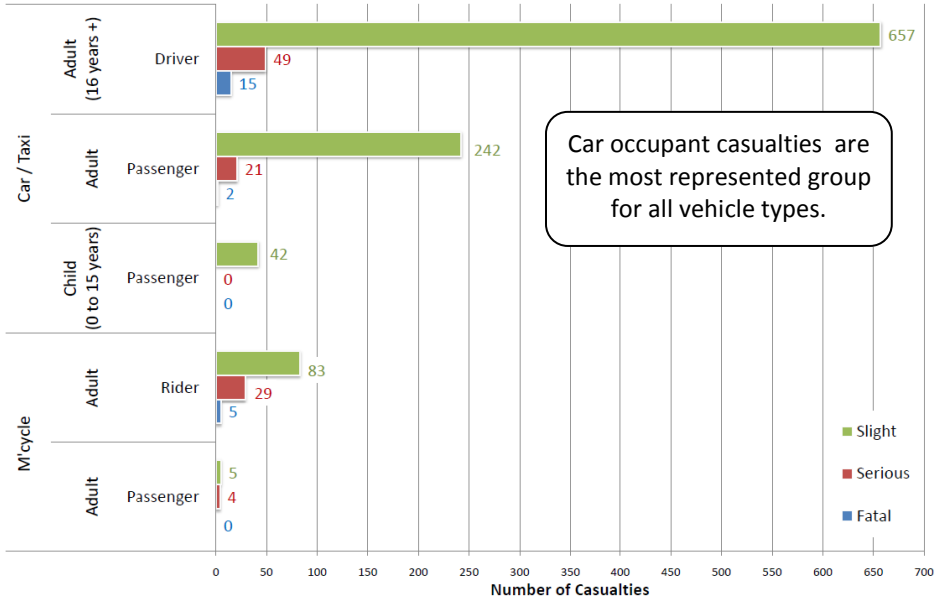
In 2010 there were 1147 collisions which resulted in 1535 casualties, of these 187 were killed or seriously injured (KSI). In comparison with 2009 the number of KSIs has decreased by 20% and the overall number of people injured has decreased by 11%. 2010 had the lowest number of casualties since records began in 1974.

The number of child casualties continues to fall, with a reduction of 19% in comparison with 2009 and continues the downward trend from previous years for all child casualties.

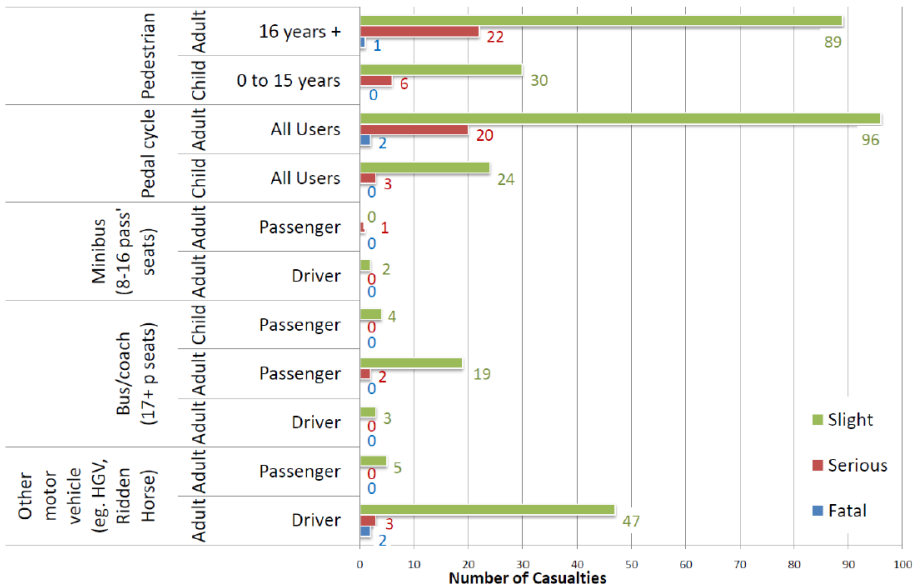
Gloucestershire Casualties by Severity (Totals between 2004 & 2010)



### Casualties by Severity for Car & Motorcycle (Gloucestershire 2010)



### Casualties by Severity for Pedestrians, Pedal Cycles, Minibus, Coaches & Other vehicles ( Gloucestershire 2010)

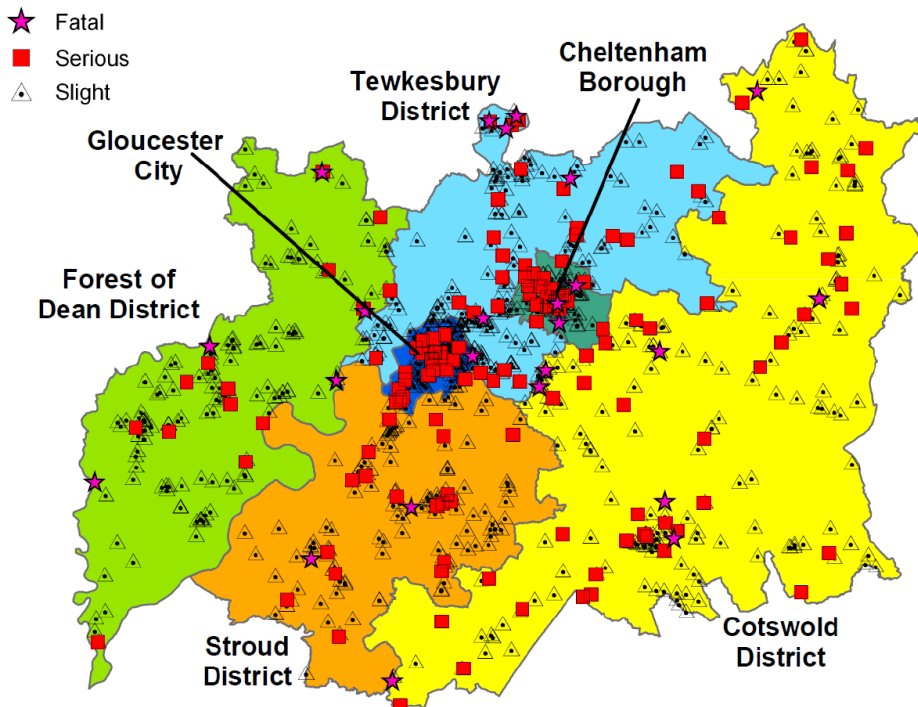


### Gloucestershire Casualties by District (2010)

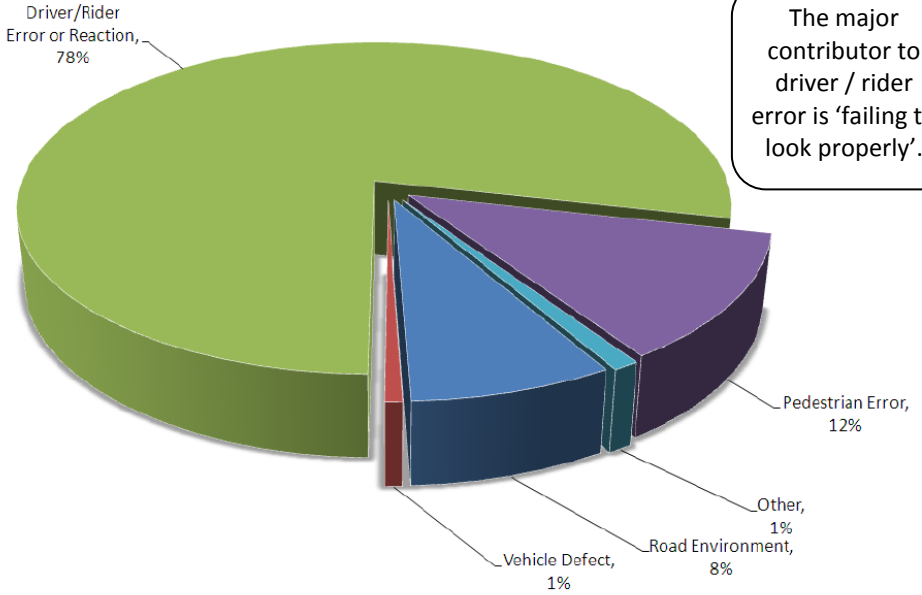
District	Population*	Fatal	Serious	Slight	Total	Casualties / 1000 pop.*
Cheltenham	113,900	3	24	178	205	1.80
Cotswold	83,500	10	48	296	354	4.24
Forest of Dean	82,800	6	15	195	216	2.61
Gloucester	117,300	1	22	270	293	2.50
Stroud	111,100	2	22	200	224	2.02
Tewkesbury	80,600	5	29	209	243	3.01
<b>Gloucestershire</b>	<b>589,200</b>	<b>27</b>	<b>160</b>	<b>1348</b>	<b>1535</b>	<b>2.61</b>

\*Office of National Statistics - Mid Year Estimates 2009 (Website: <http://www.gloucestershire.gov.uk/inform/index.cfm?articleid=99802>)

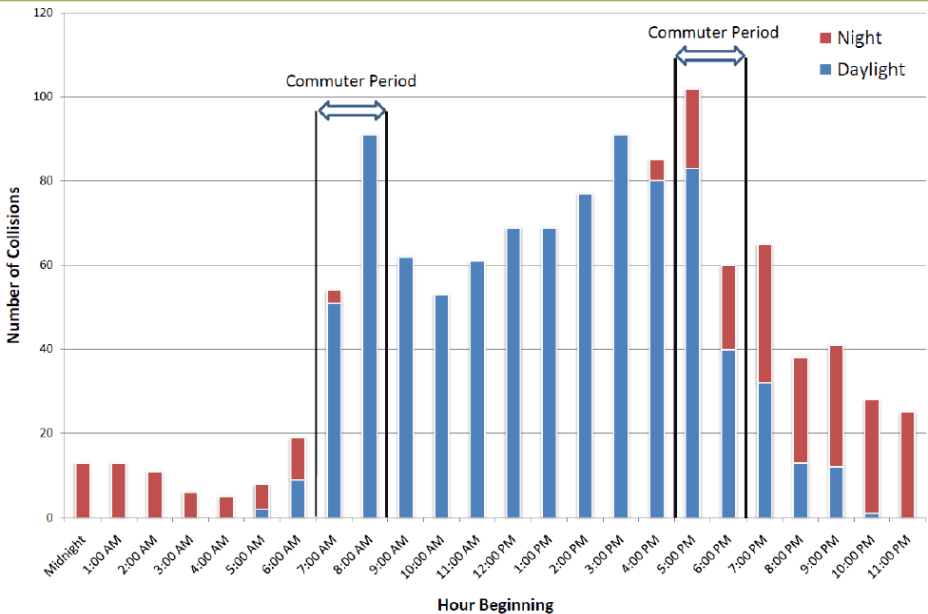
### Collision Location by District (2010)



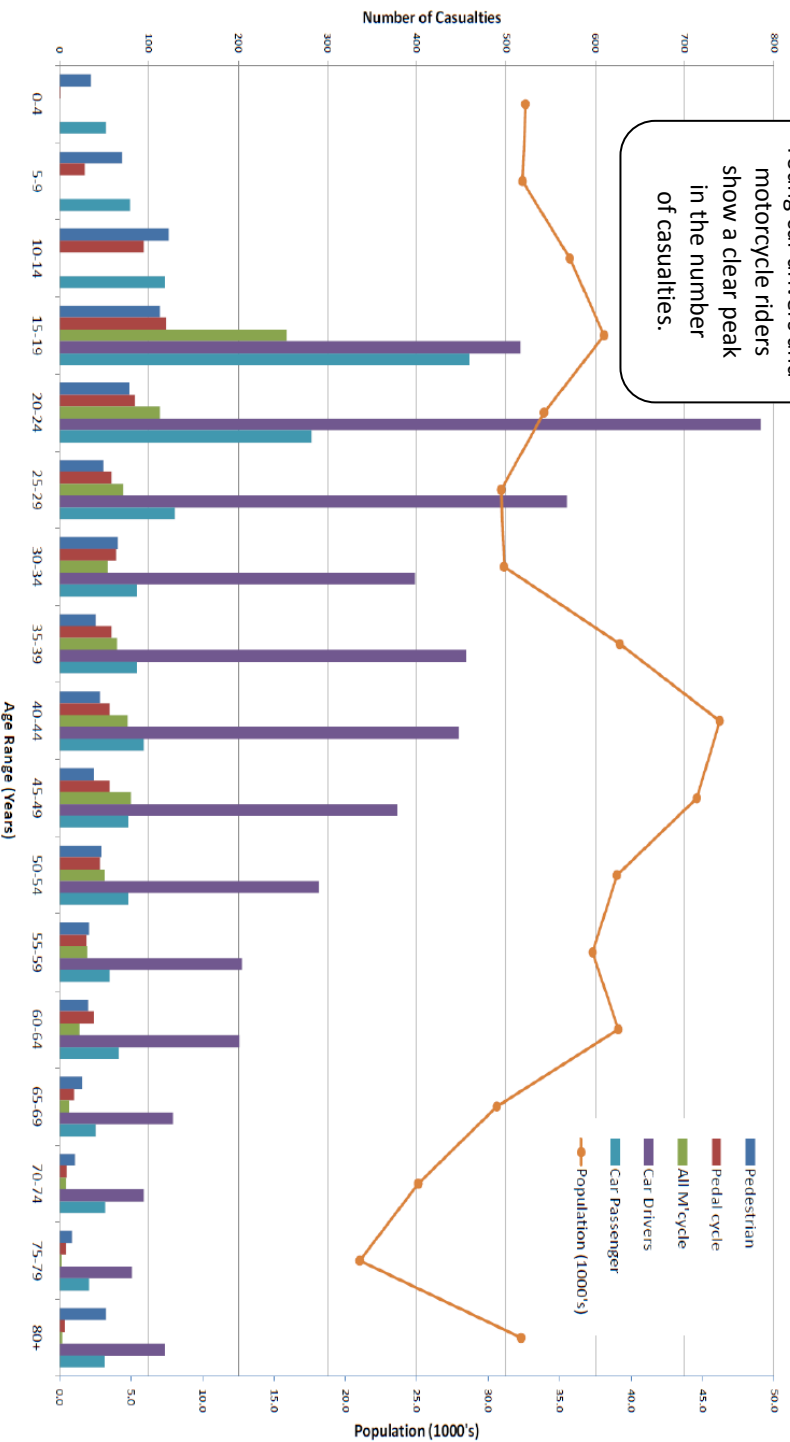
## Main causes of collisions (2010)



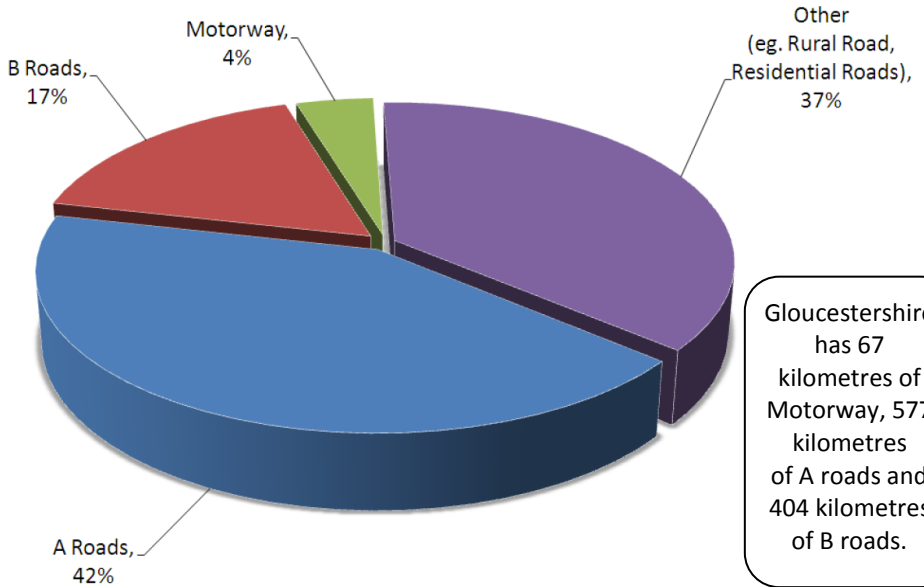
## Collisions by Time of Day (2010)



## Casualties by Age & Road User (2006 to 2010)

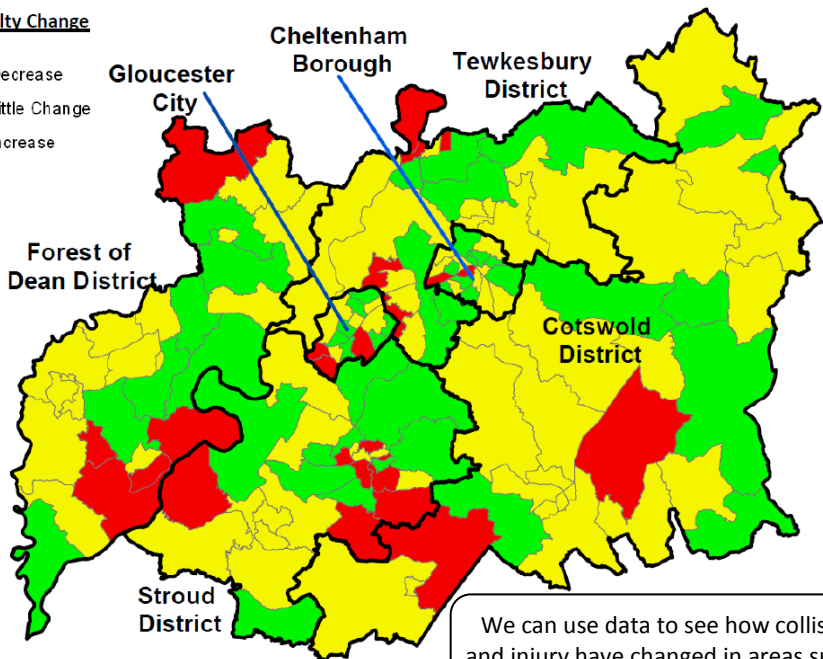
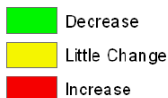


## Gloucestershire Collisions by Road Type (2010)



## Killed & Seriously Injured (KSI) casualty percentage change by ward (Comparison with 1994 to 1998 data with 2006 to 2010 data)

### KSI Casualty Change



We can use data to see how collisions and injury have changed in areas such as county wards.

## For further information contact us:

- **Gloucestershire Road Safety Partnership,  
Shire Hall,  
Westgate Street,  
Gloucester,  
GL1 2TH.**
- **By telephone: Tel +44 01452 425 600**
- **By fax: Fax +44 01452 425 640**
- **By email: [roadsafety@gloucestershire.gov.uk](mailto:roadsafety@gloucestershire.gov.uk)**
- **Website: [www.roadsafety-gloucestershire.org.uk](http://www.roadsafety-gloucestershire.org.uk)**
- **Education website:  
[www.roadsafety-gloucestershire.org.uk/resource-centre](http://www.roadsafety-gloucestershire.org.uk/resource-centre)**

---

Our mission is to: “improve the quality of life for people living, working and travelling within Gloucestershire by reducing collisions and casualties on our roads and promoting road safety skills for life”.

---

# RoadSafety

